

GEARUP



MY FUTURE
CSU MONTEREY BAY

GEAR UP

LUIS ECUTE & LESLIE GONZÁLEZ





Mission

Gaining Early Awareness for Undergraduate Programs

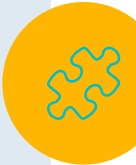
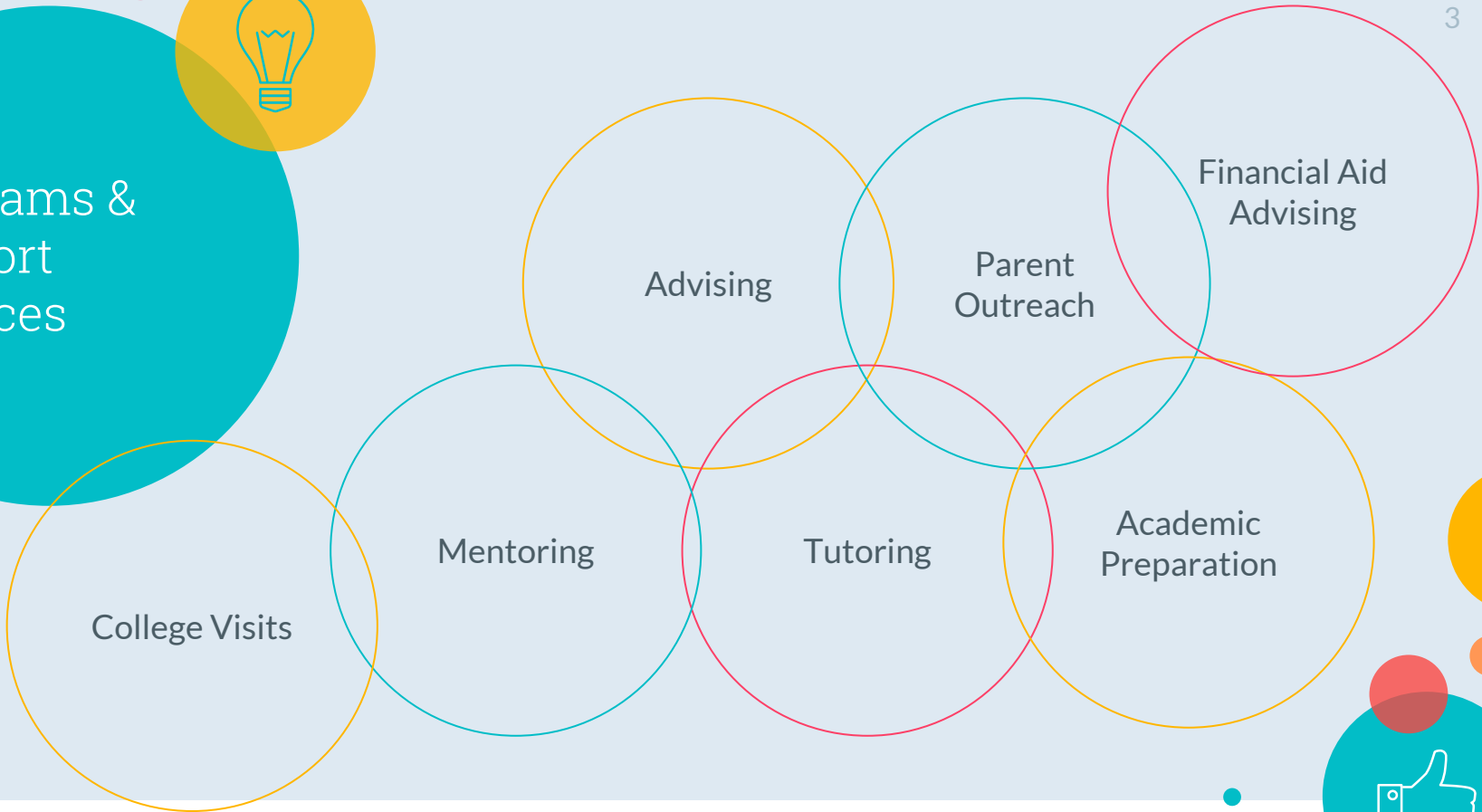
A federal college readiness program funded by the Department of Education that aims to increase the number of students who are prepared to enter and succeed in postsecondary education.



GEAR UP. (n.d.). Retrieved April 10, 2018, from <https://csumb.edu/gearup>



Programs & Support Services



A graphic with a teal background and a large white circle in the center. The text "Community Served" is written in teal inside the circle. Surrounding the circle are several smaller circles in yellow, orange, red, and pink. Some of these circles contain icons: a puzzle piece, a lightbulb, and a thumbs-up. There are also small white and yellow dots scattered around.

Community
Served

Seaside High School and Seaside Middle School



Ethnicity	Seaside High School (2016-2017)				
	Grade 9	Grade 10	Grade 11	Grade 12	Total
African American	18	21	20		28
American Indian or Alaska Native	1	0	1		2
Asian	4	9	10		11
Filipino	19	13	12		17
Hispanic or Latino	207	187	189		172
Pacific Islander	6	11	8		8
White	26	22	27		38
Two or More Races	12	10	12		38
Total	293	273	279		282

Ethnicity	Seaside Middle School (2016-2017)			
	Grade 6	Grade 7	Grade 8	Total
African American	9	15	14	38
American Indian or Alaska Native	1	0	0	1
Asian	5	8	5	18
Filipino	11	8	12	31
Hispanic or Latino	173	153	165	491
Pacific islander	6	3	3	12
White	14	25	13	52
Two or More Races	19	7	6	32
Total	238	219	218	675

California Department of Education. (n.d.). *DataQuest: Enrollment data - 2016-2017: School enrollment by ethnicity and grade*. Retrieved from <https://dq.cde.ca.gov/dataquest/SearchName.asp?rbTimeFrame=oneyear&rYear=2016-17&cName=Seaside&Topic=Enrollment&Level=School&submit1=Submit>





Seaside High School and Seaside Middle School

Truancy Rates

School	Enrollment	Truant Students	Truancy Rate (%)
Seaside High	1,136	898	79.05
Seaside Middle	747	237	31.73

Social Issues

Postsecondary Eligibility/Enrollment:

High School	Grads	Class of 2016	
		UC/CSU Eligible	
Alisal High	497	156	
Everett Alvarez	483	203	
Salinas High	528	261	
El Puente	54	0	
Seaside High	208	82	
Greenfield	199	14	
King City	211	23	
Gonzalez	172	86	
Soledad	290	96	
NMC	240	101	

Academic Performance En Route to HS Graduation and Postsecondary Enrollment:

- Fail to meet A-G
- Intent and goals after HS

Knowledge of Postsecondary Education:

- Little access to information such as FAFSA, SAT, etc.
- Family misconceptions of postsecondary education

Addressing Social Issues



Increase Academic Performance and Preparation for Postsecondary Education:

- Increase performance in math
- Increase GPA

Increase Graduation Rate and Postsecondary Enrollment:

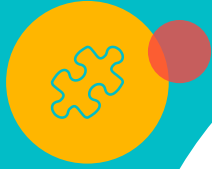
- Increase dual-enrollment while in high school
- Increase HS retention rate
- Career pathway development

Increase Family Knowledge of Postsecondary Education

- FAFSA completion
- Increase student and parent participation in college readiness workshops



Agency Funding





\$2 Million Annually
That's a lot of money

7 Year Grant
And a long time

Cost Share Requirement

For every dollar GU receives, they must match those funds to demonstrate to the federal government their partnership with the community.





MENTOR



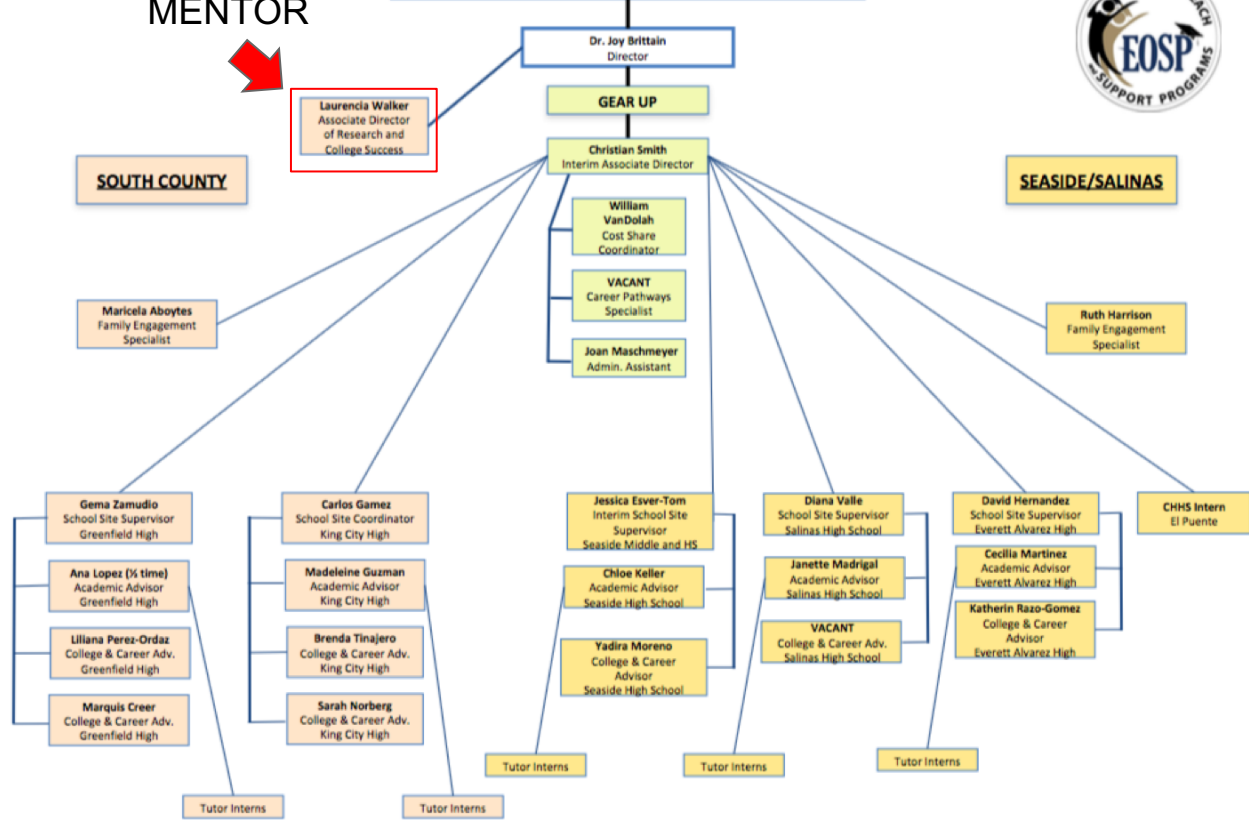
Laurencia Walker
Associate Director
of Research and
College Success

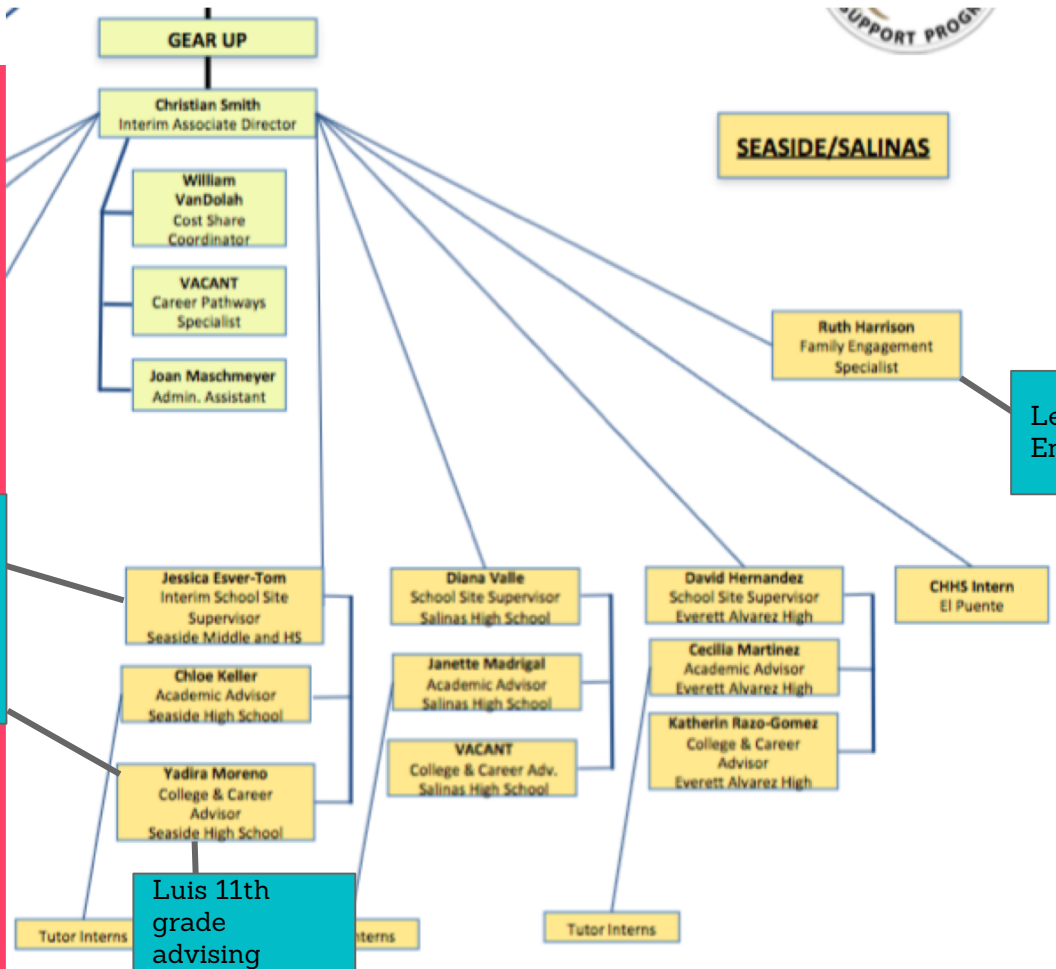
Early Outreach and Support Programs, cont.



SOUTH COUNTY

SEASIDE/SALINAS





SEASIDE/SALINAS

Ruth Harrison
Family Engagement Specialist

Leslie Family Engagement

Leslie 8th grade advising & Family Engagement

Luis 11th grade advising

Collaborative Partners



ETS

Upward Bound

Dual Enrollment

Local colleges:
MPC,
Hartnell,
USCS

Presentations about college and financial aid

Schools and Districts

Make GEAR UP possible



Our Roles



Luis

- Advising 11th grade students for post-graduation goals
- Assisting with SAT registration
- Support with the College Club
- Presentations to AVID classes regarding professional development topics such as time management
- Will be assisting with FAFSA, college applications, and other relevant applications in the lead up to post-graduation

Leslie

- Translation of documents and interpretation in meetings with teachers/parents/students
- Advising 8th grade students for the transition to high school
- Data management - inputting services, hours, and events into information management to prepare for auditing
- Outreach to parents about upcoming enrichment events
- Flyer making for events
- Support with special events



A white line-art icon of a lit lightbulb is centered within a red circular background. This circle is part of a cluster of overlapping circles in red, orange, and teal in the top-left corner of the slide.

Thanks!

Any questions?

Luis Ecute: lecute@csumb.edu

Leslie Gonzalez: legonzalez@csumb.edu

A white line-art icon of four interlocking puzzle pieces is centered within a pink circular background. This circle is part of a cluster of overlapping circles in pink, red, and teal in the bottom-right corner of the slide.A white line-art icon of a hand with the thumb pointing up is centered within a teal circular background. This circle is part of a cluster of overlapping circles in teal, red, and orange in the bottom-right corner of the slide.